

# MANCHESTER, CONNECTICUT 1555 TOLLAND TURNPIKE



**FOR SALE:**

**\$389,500**

**FOR LEASE:**

**\$38,850/yr NNN**

**4.52 acres of land available**

**Zoned industrial**

**Permitted uses: light industrial, manufacturing, warehouse, wholesale trade and storage,  
business and corporate offices and radio and television broadcasting.**

**Located next to Gerber Scientific, Inc. Visibility from Rte 291**

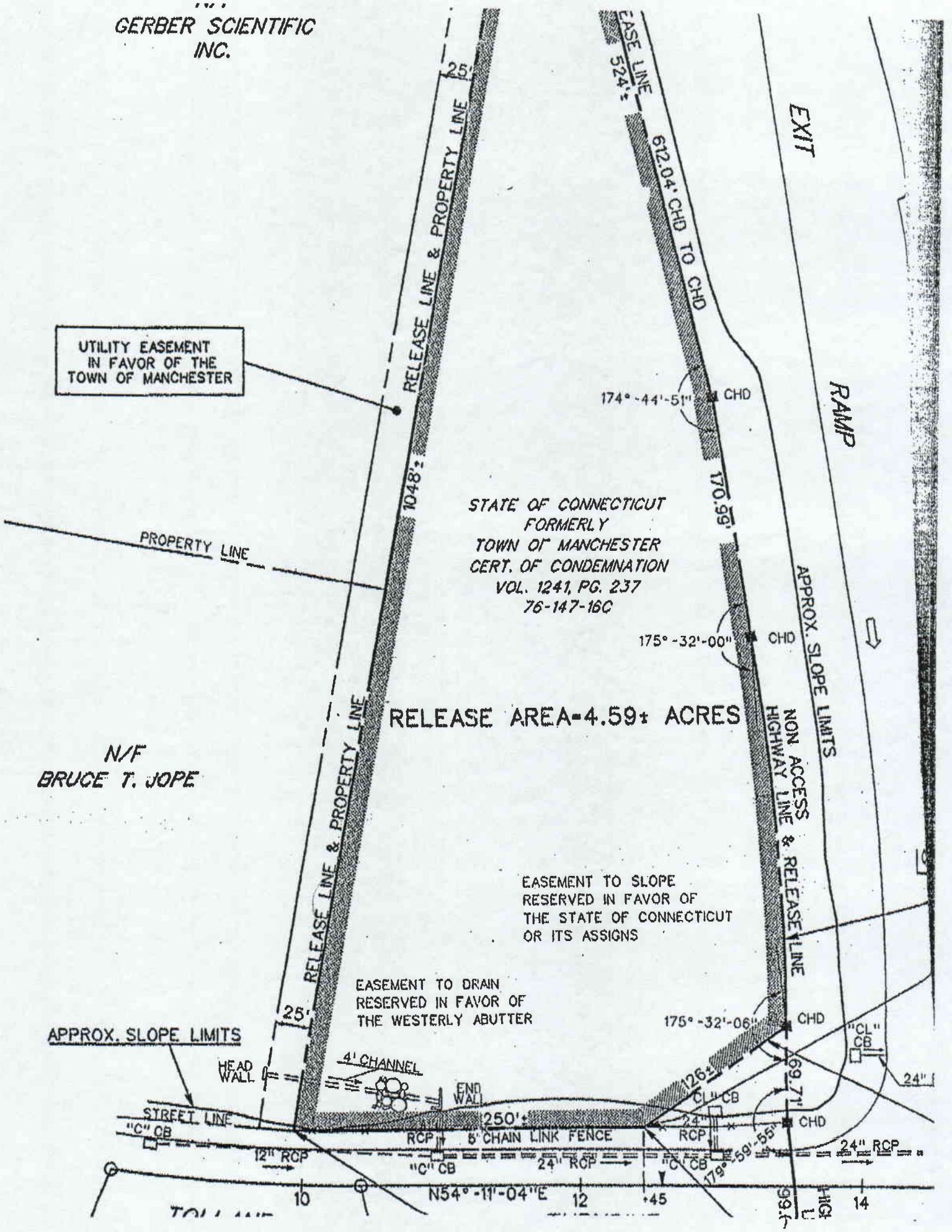
**Lyman**

**716 Beaumont Hwy, Lebanon, CT 06249**

**860-887-5000 \* Fax 860-886-0600**

**Email: [info@LymanRE.com](mailto:info@LymanRE.com) [www.LymanRE.com](http://www.LymanRE.com)**

All information stated is from sources deemed reliable and is submitted subject to errors, omission, changes of other terms and conditions, prior sales, financing or withdrawal without notice.



STATE OF CONNECTICUT  
 FORMERLY  
 TOWN OF MANCHESTER  
 CERT. OF CONDEMNATION  
 VOL. 1241, PG. 237  
 76-147-16C

RELEASE AREA-4.59± ACRES

EASEMENT TO SLOPE  
 RESERVED IN FAVOR OF  
 THE STATE OF CONNECTICUT  
 OR ITS ASSIGNS

EASEMENT TO DRAIN  
 RESERVED IN FAVOR OF  
 THE WESTERLY ABUTTER

UTILITY EASEMENT  
 IN FAVOR OF THE  
 TOWN OF MANCHESTER

N/F  
 BRUCE T. JOPE

APPROX. SLOPE LIMITS

EXIT

RAMP

APPROX. SLOPE LIMITS  
 NON ACCESS  
 HIGHWAY LINE & RELEASE LINE

STREET LINE

"C" CB

"C" CB

"C" CB

"C" CB

"CL" CB

"CL" CB

"C" CB

"C" CB

N54°-11'-04"E